

PARK VIEWS GALORE

Two communities in desirable central Shawnee, Kansas
(a rapidly growing Johnson County location):

Oakbrook
of Crimson Ridge

Maple Wood
of Crimson Ridge

The exciting communities of Crimson Ridge offer striking new-home values. Forty lush acres of heavily-treed greenways border and intersect both communities, allowing for an abundance of exquisite park view homesites. With all the extras it has to offer, Crimson Ridge deserves immediate consideration.

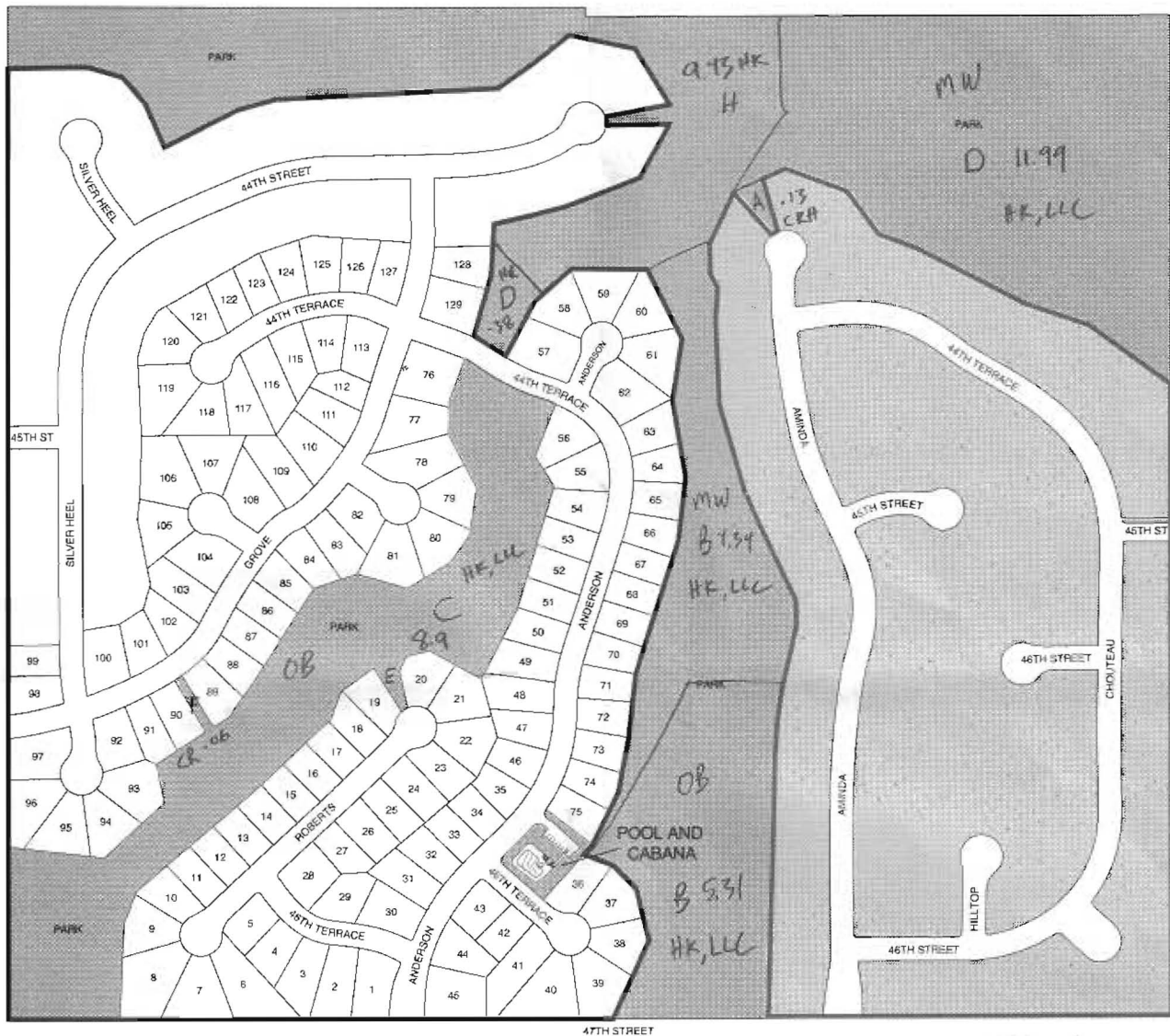
- Award-winning DeSoto Schools.
- Community Pool and Cabana.
- Lush green spaces with mature trees in and around the communities.
- An abundance of homesites offering heavily-treed backyard park views.
- Many homesites tucked away on quite, privacy-enhancing cul de sacs.
- Distinctive stone community entry with fountain, stone columns and wrought iron fencing.
- Minutes to key highway access:
 - 30 minutes to Lawrence
 - 15 minutes to Corporate Woods
 - 25 minutes to KCI via I-435
- Full-time, on-site real estate professionals to ease the home-buying process.



A Rodrock Community

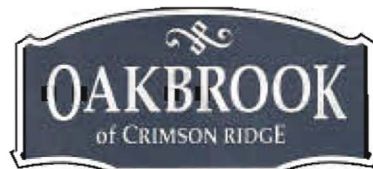
Crimson Ridge Homesite Map

1-01 3851



Oakbrook

Maple Wood



A Rodrock Community

— Welcome Center —

Leslie Young, Community Manager
Cell Phone (816) 830-2079

0.6 miles west of Monticello & 47th Street
Community Phone (913) 422-4200

Patsy Spurrier, Community Manager
Pager (913) 818-3384

101 RODROCK DEVELOPMENT