



ARPA-FUNDED ASH STREET TREE REMOVAL 2024 & 2025

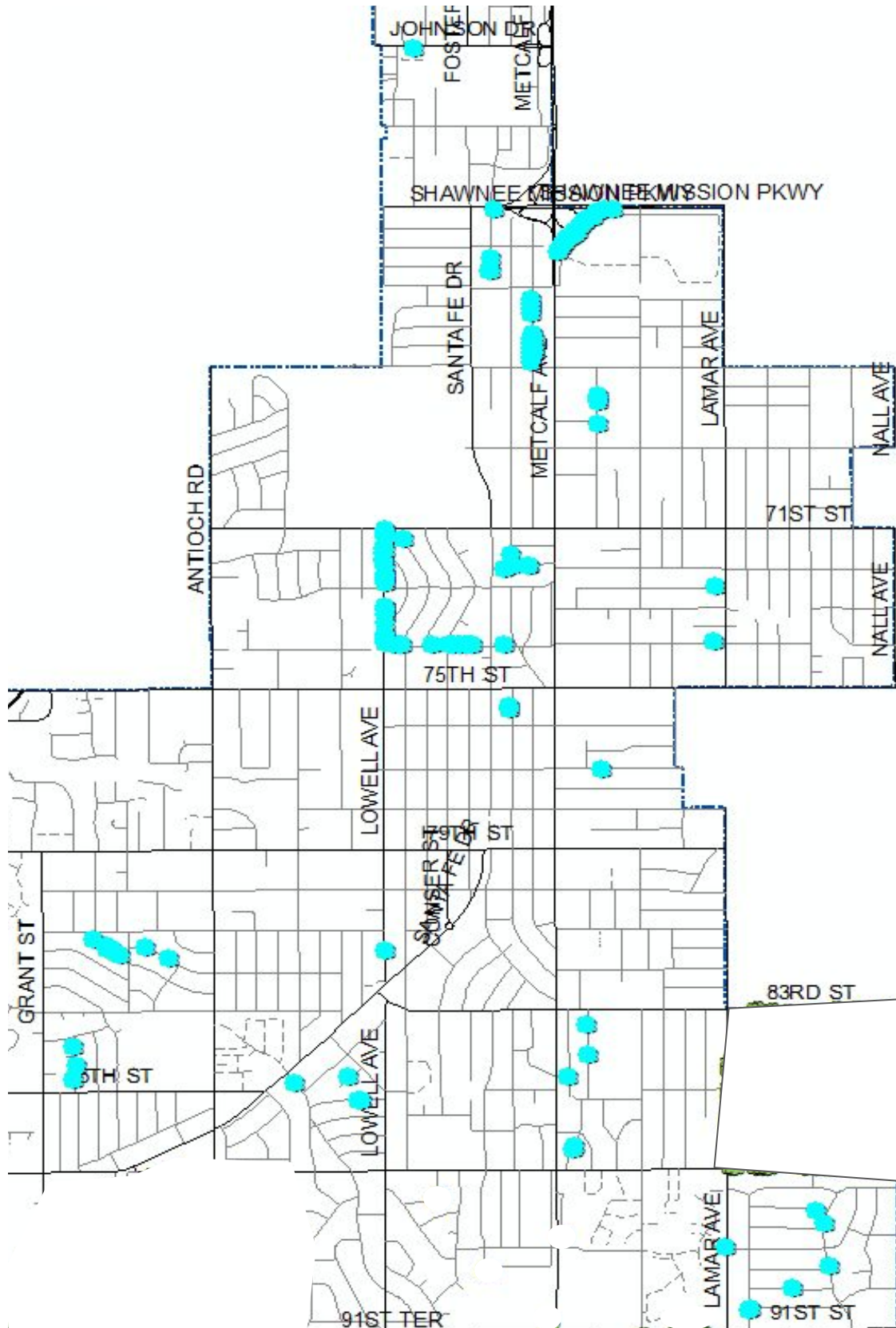
Location Maps

Routed north-south, west-east as best as possible.

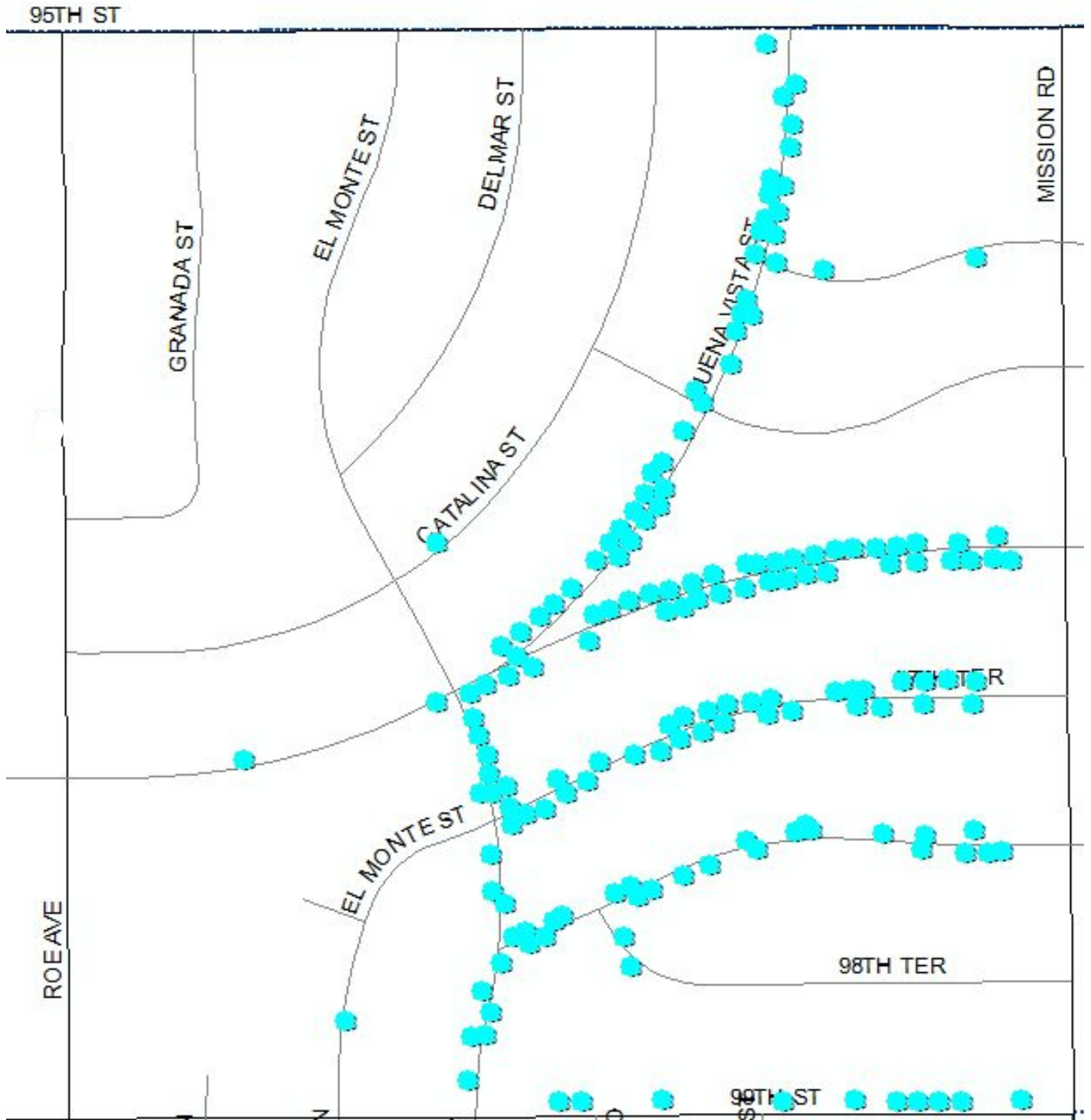
Tree locations are simply representative, and may not be 100% accurate.

February 2025
City of Overland Park, KS

Ward 1, remaining trees

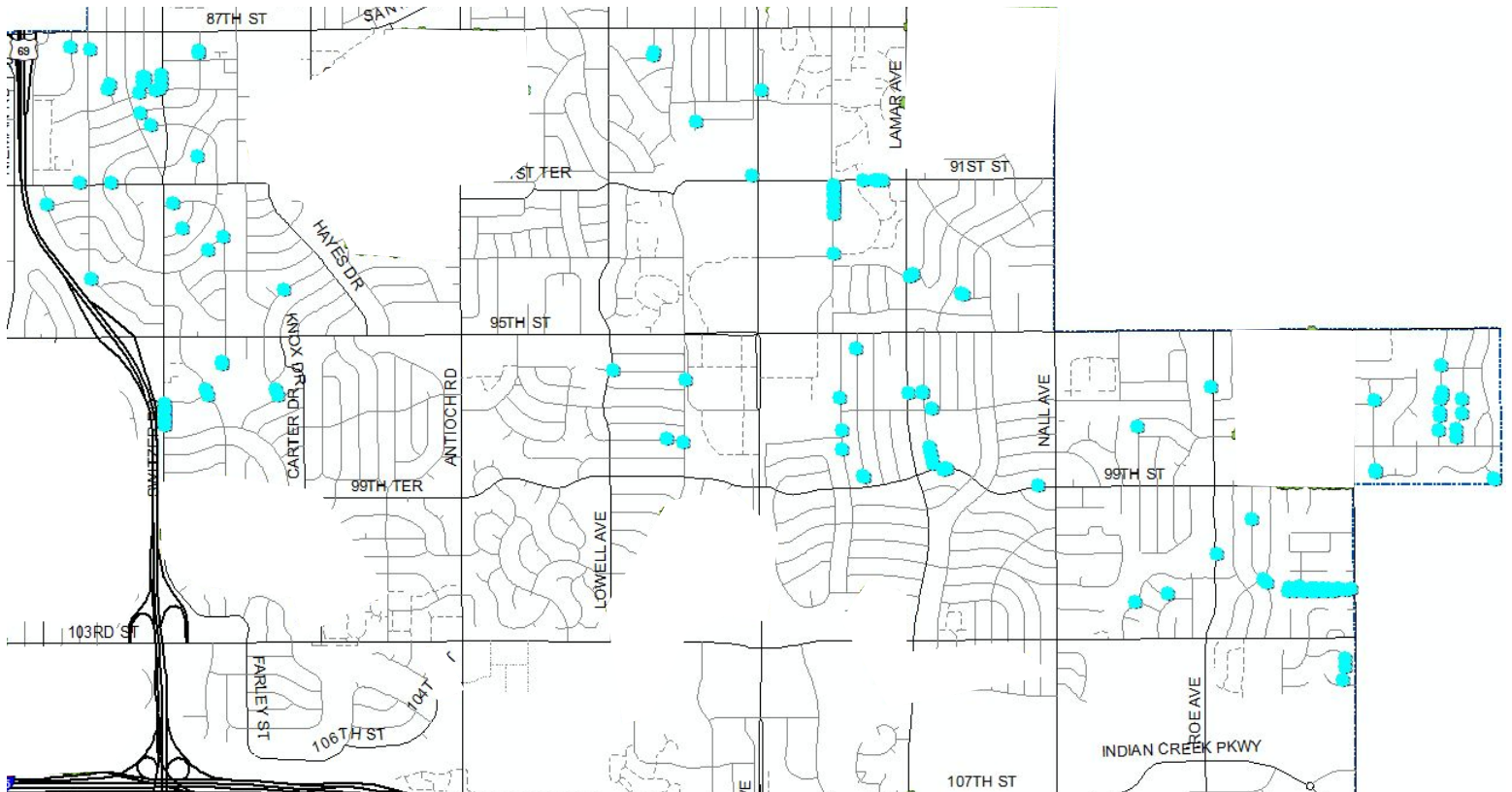


Empire Estates neighborhood

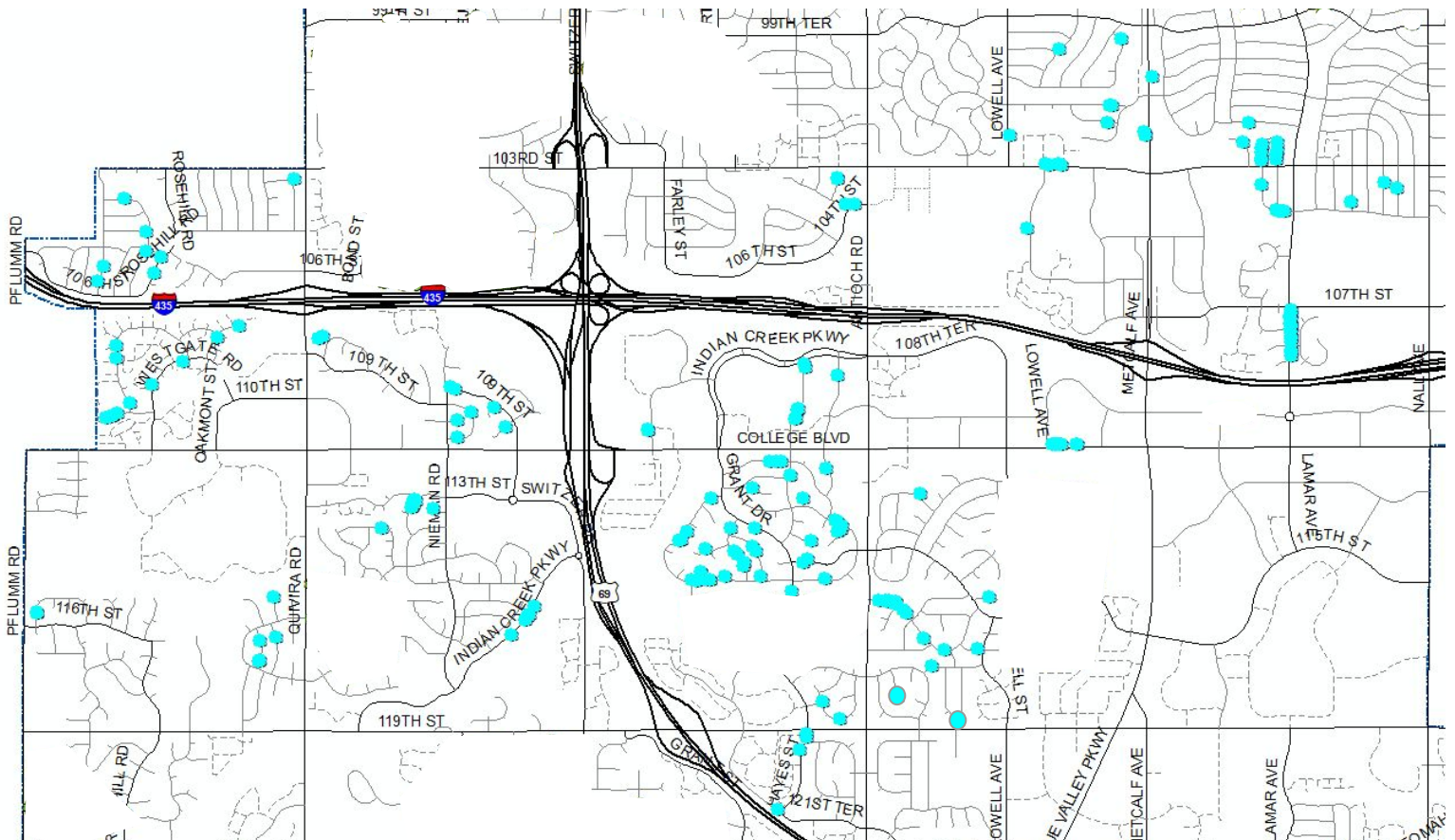


Ward 2, remaining trees

(not including Empire Estates)



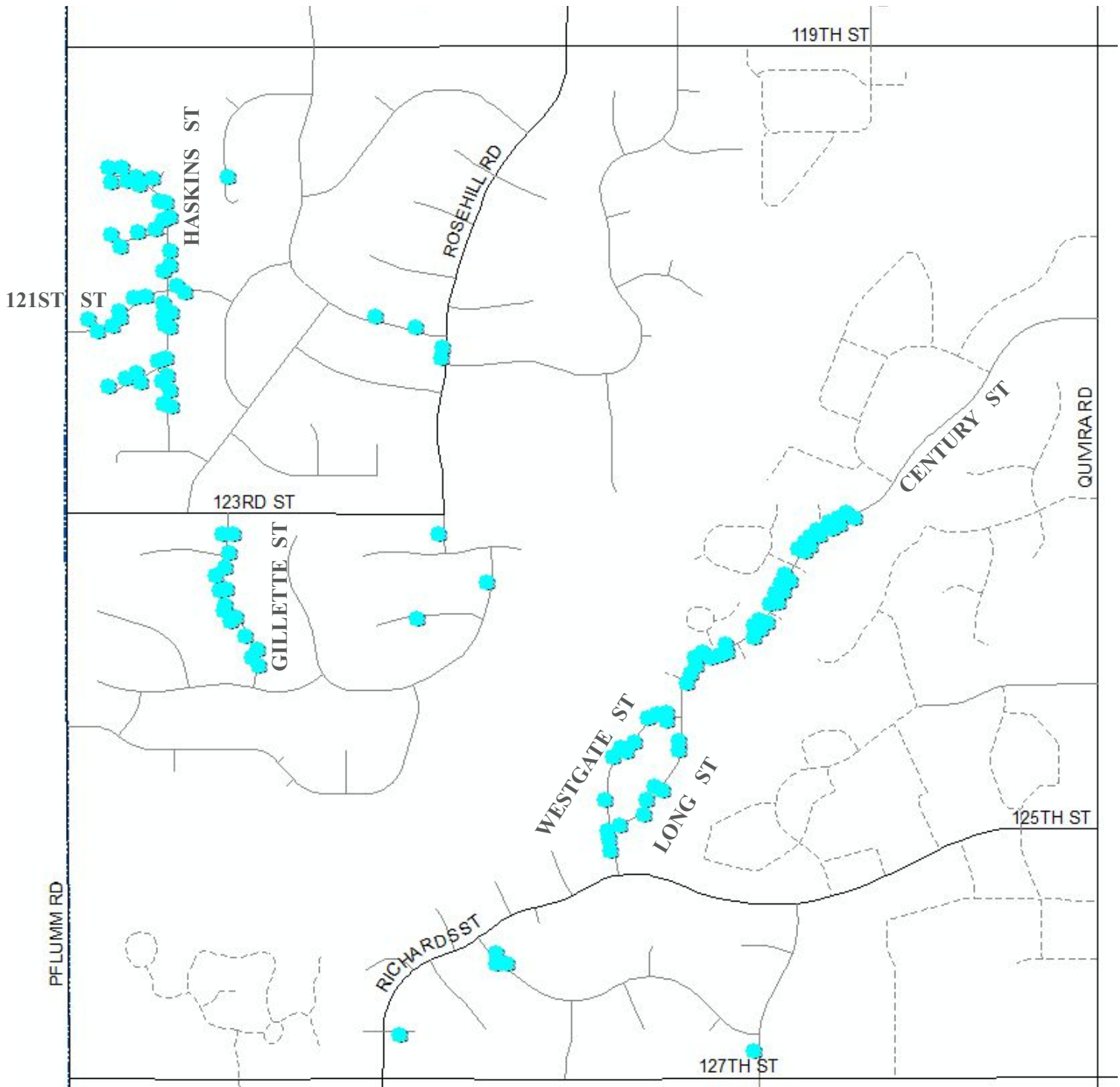
Ward 3, remaining trees



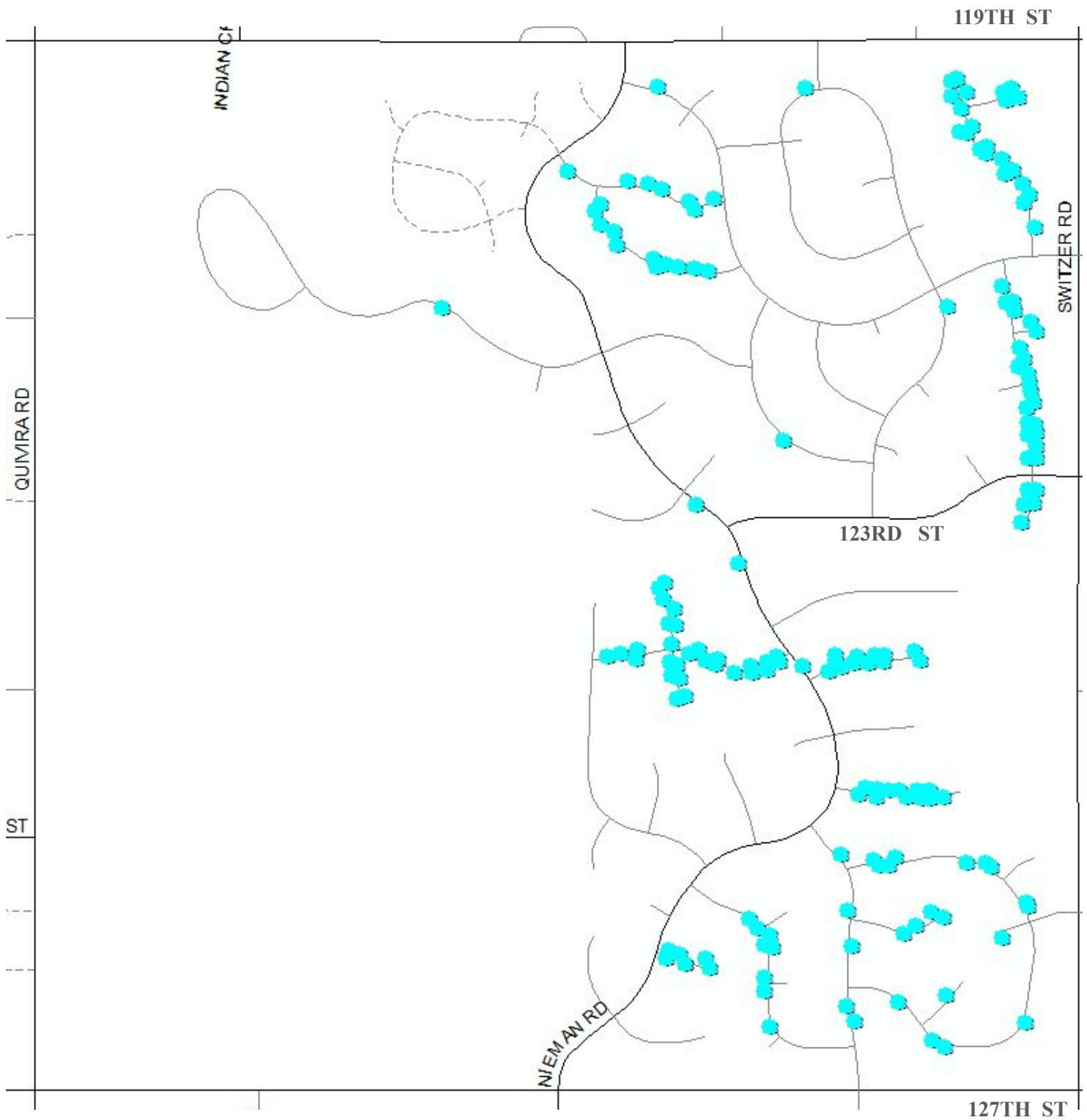
ARPA-Funded Ash Street Tree Removal 2025



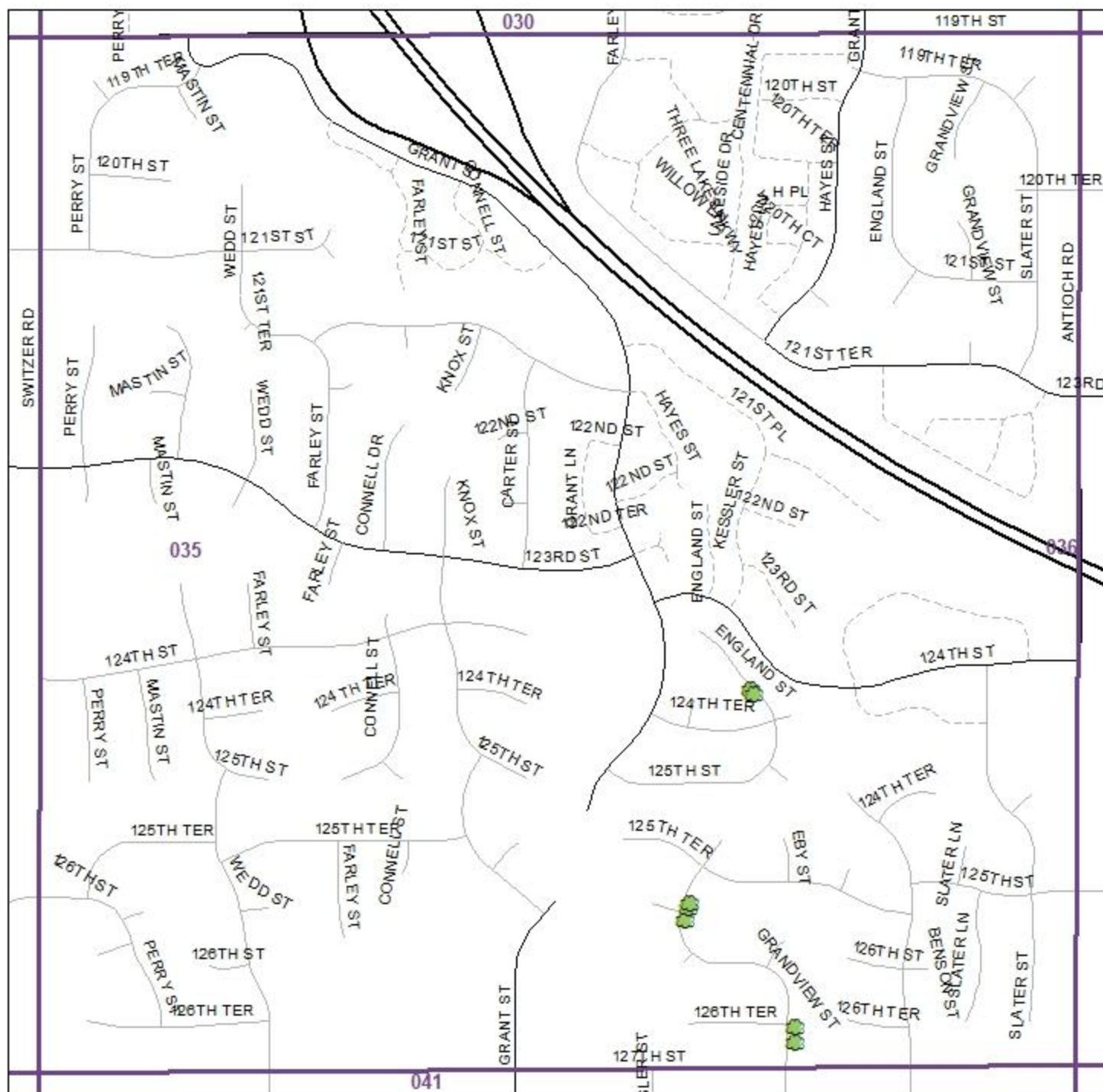
Towner Place, Villas of Fairway Woods N&S, Fairfield Manor neighborhoods



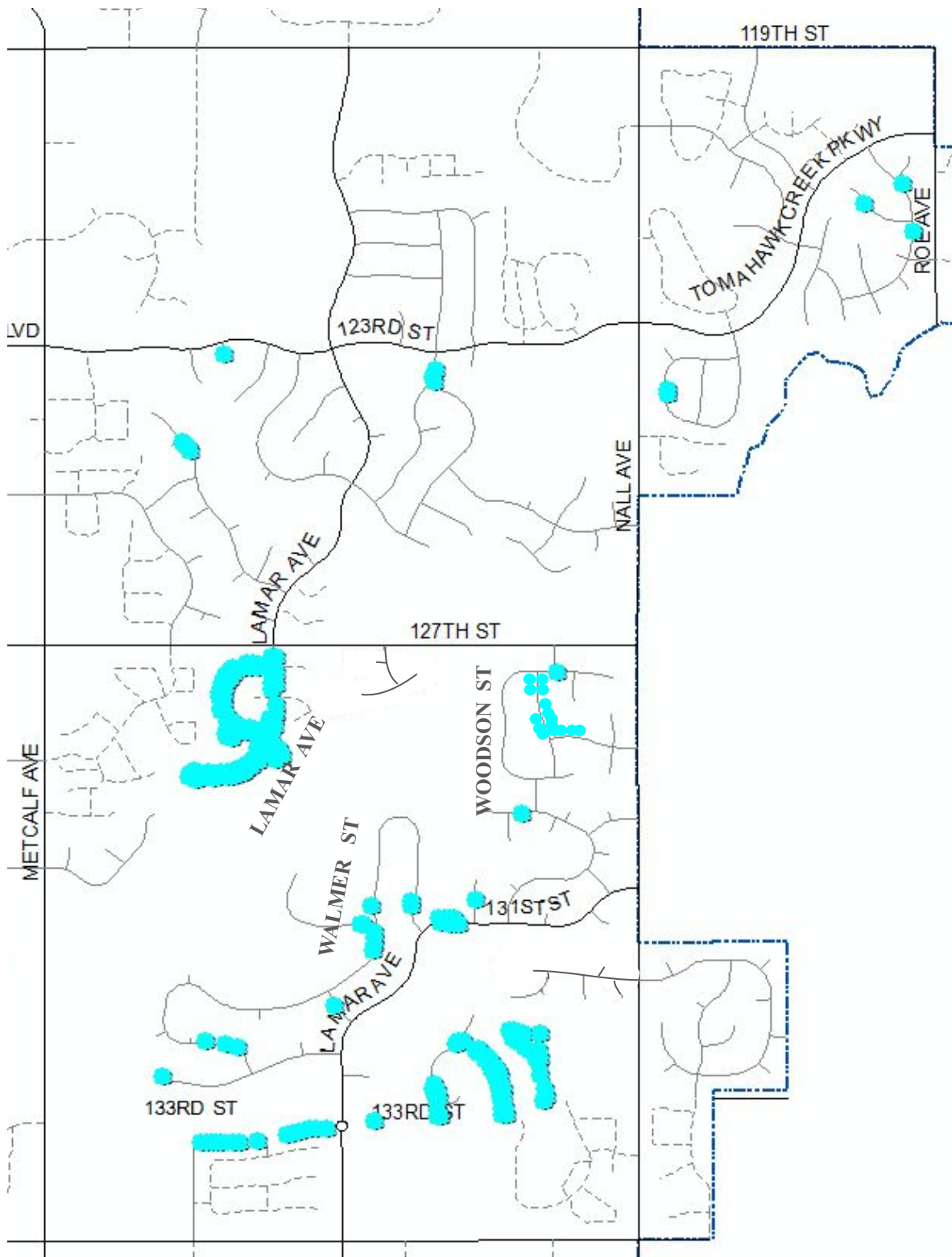
Nottingham Forest, Place & Estates Neighborhoods



ARPA-Funded Ash Street Tree Removal 2025



Deer Creek, Deer Creek Park, Village at Deer Creek, & surrounding neighborhoods

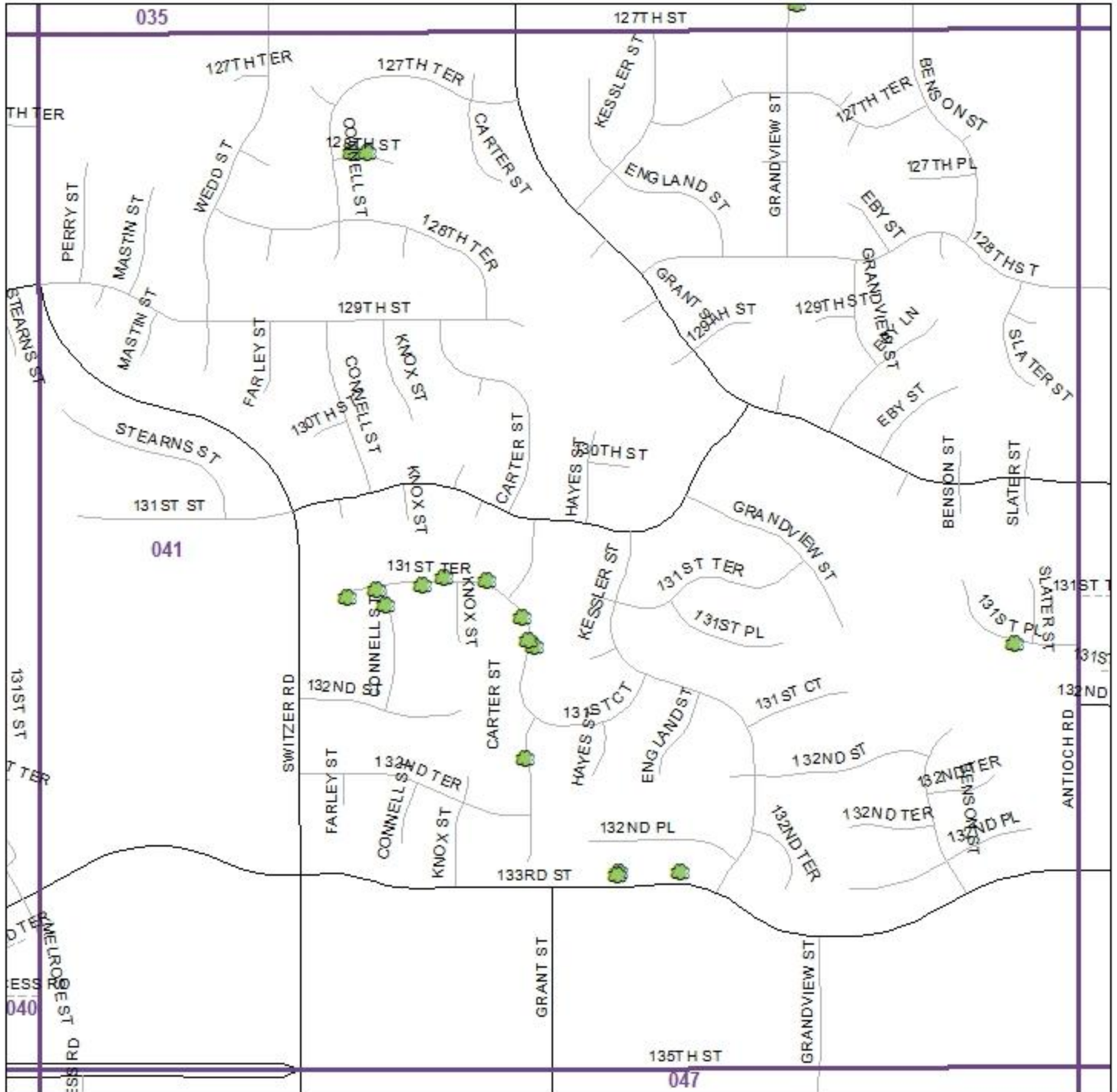




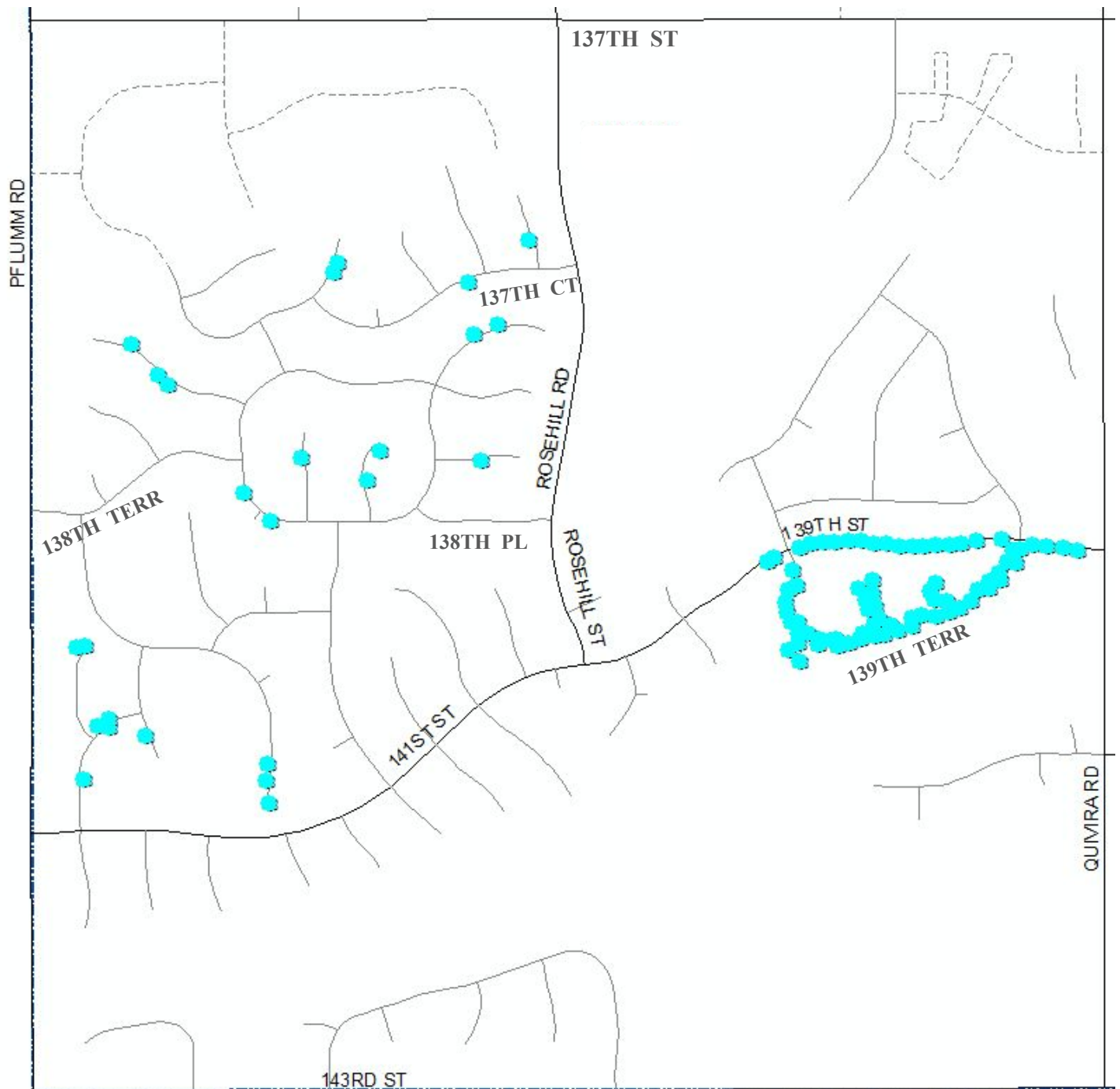
ARPA-Funded Ash Street Tree Removal 2025



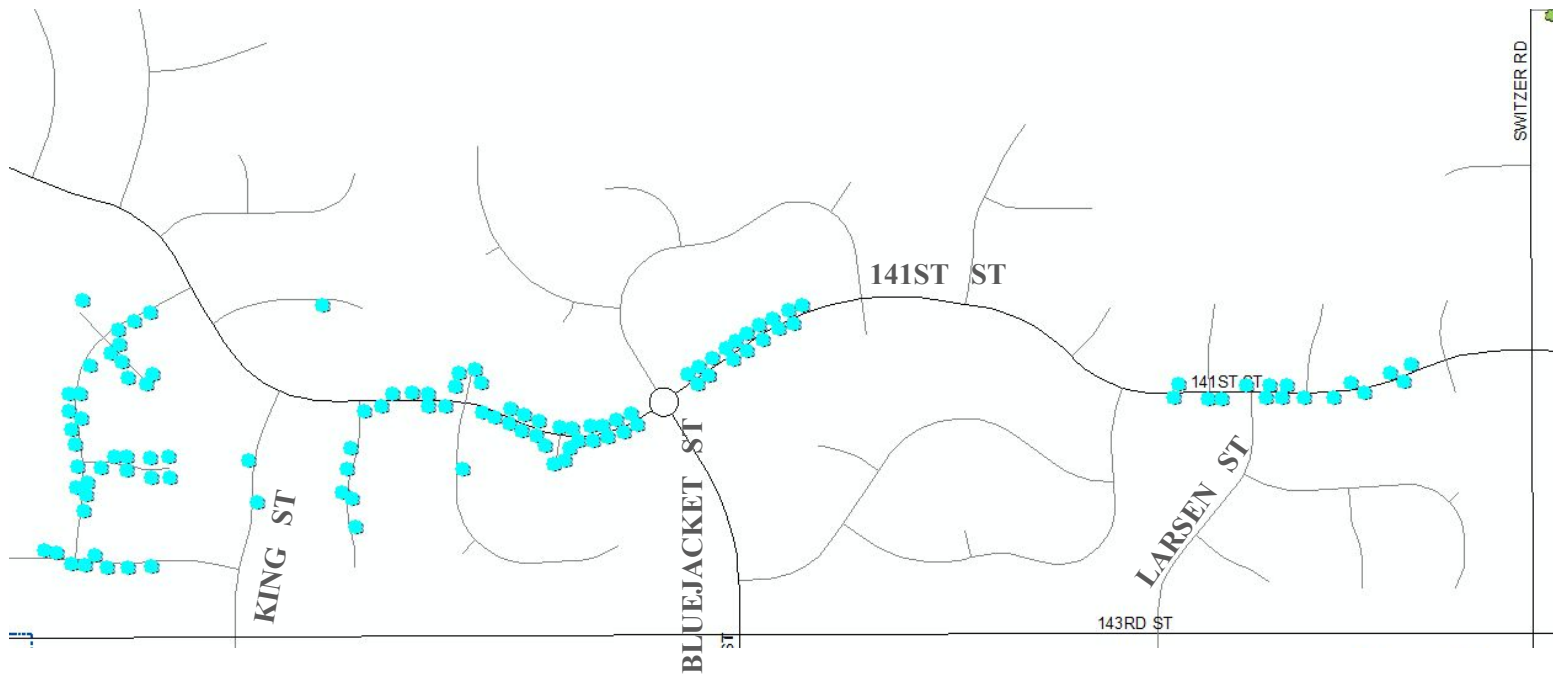
ARPA-Funded Ash Street Tree Removal 2025



Forest Glen, & Nottingham Estates at St. Andrews neighborhoods

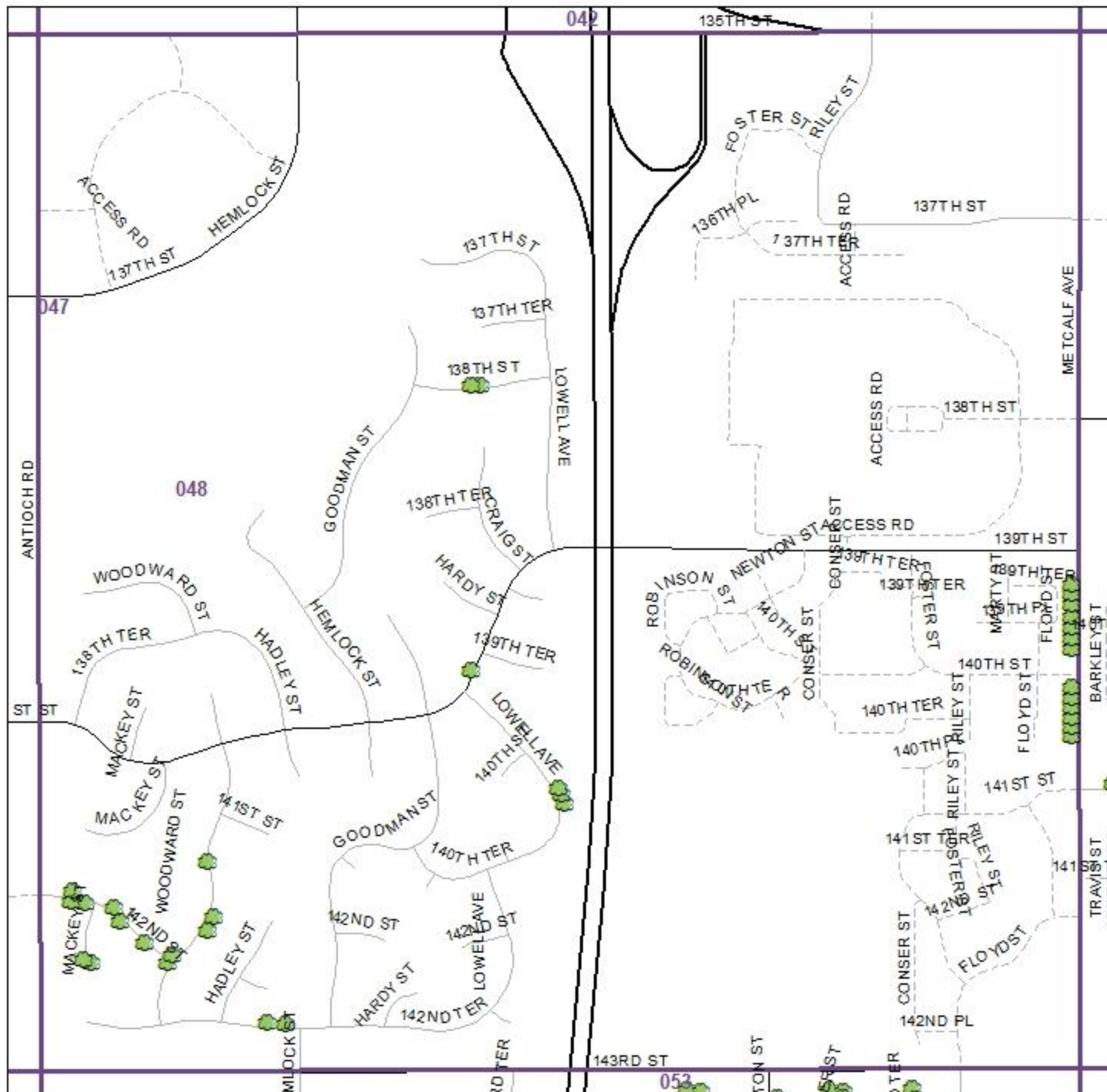


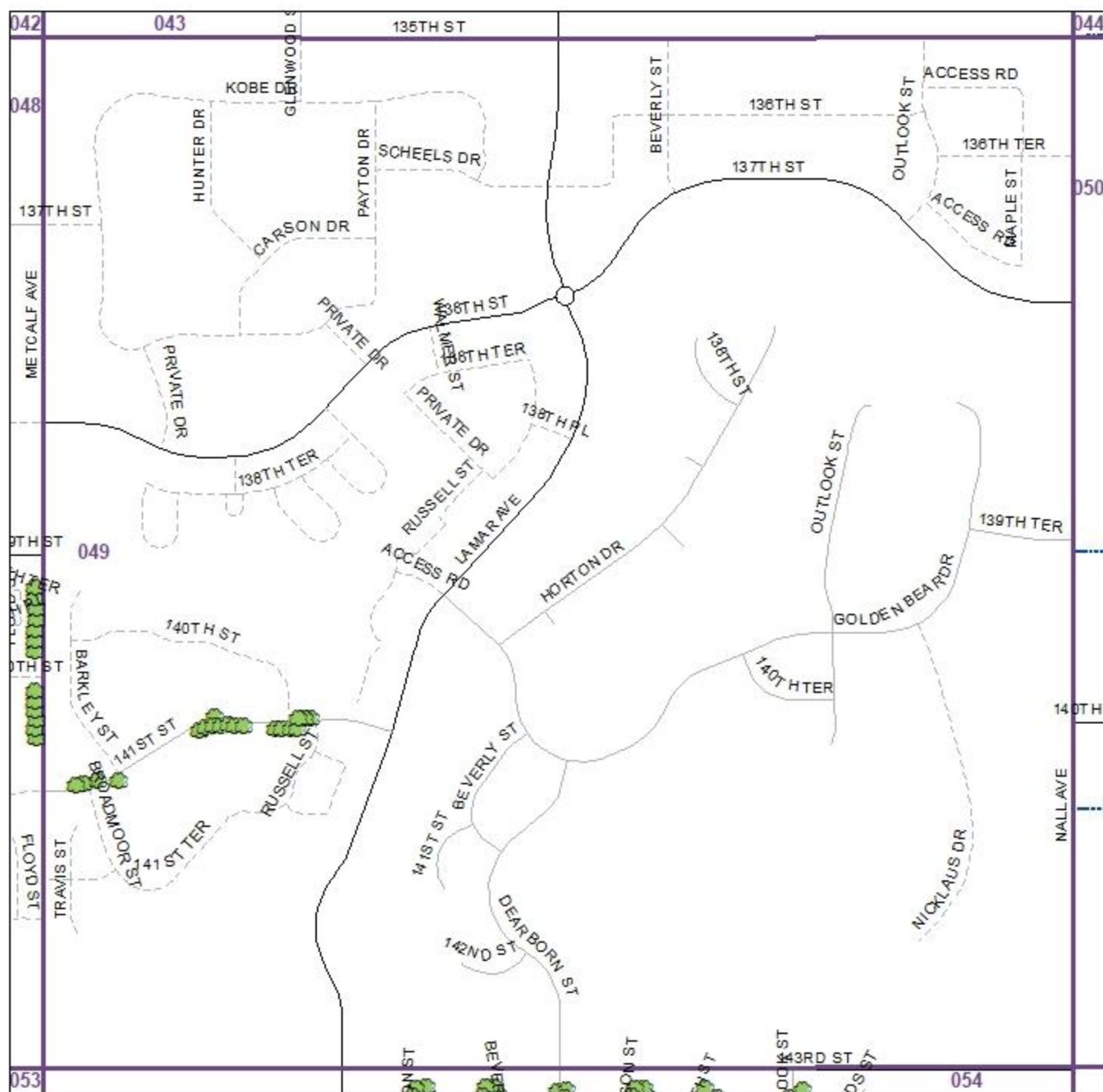
Kensington at St. Andrews, Glen Eagles, & Coventry neighborhoods



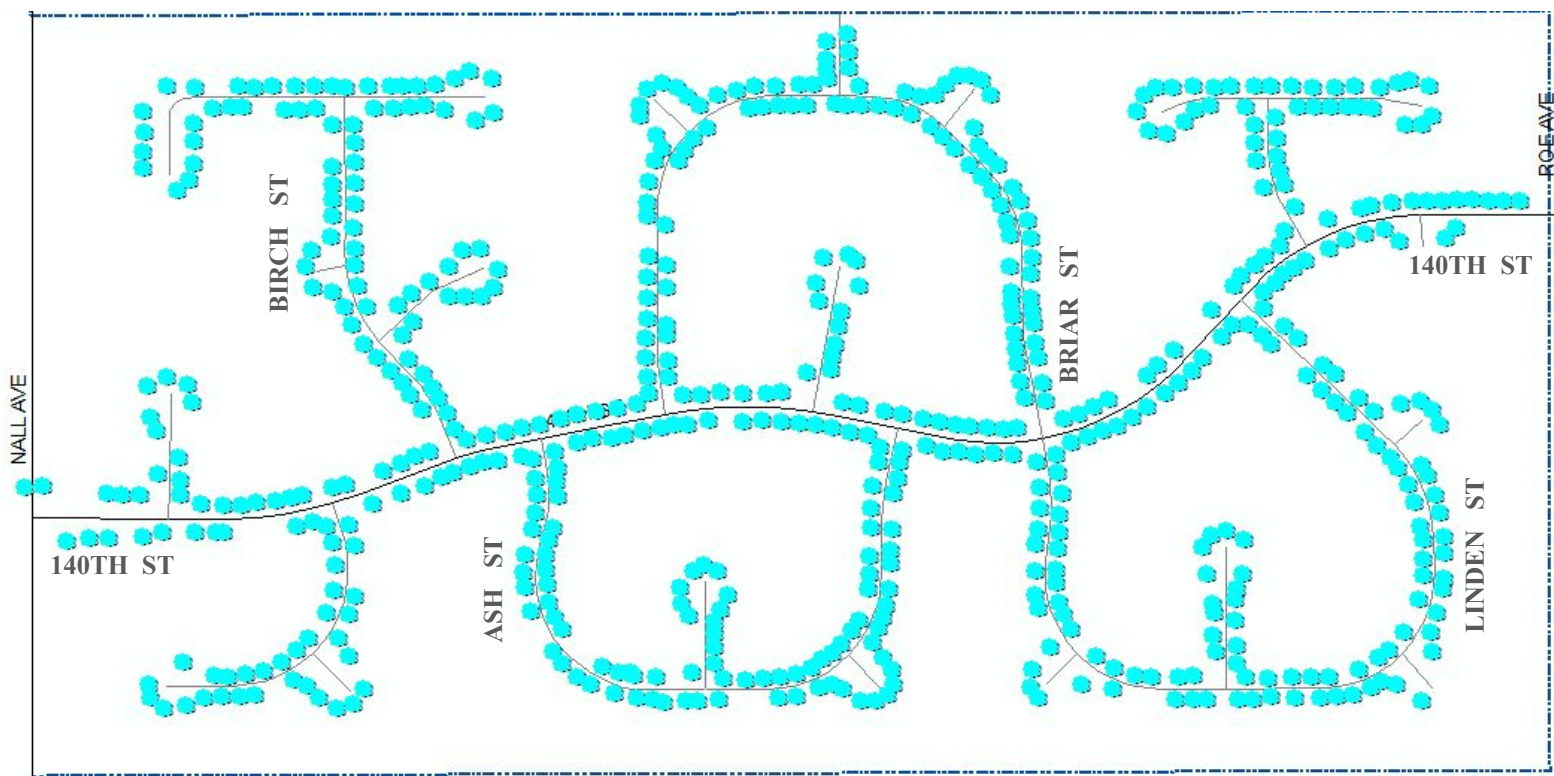
ARPA-Funded Ash Street Tree Removal 2025



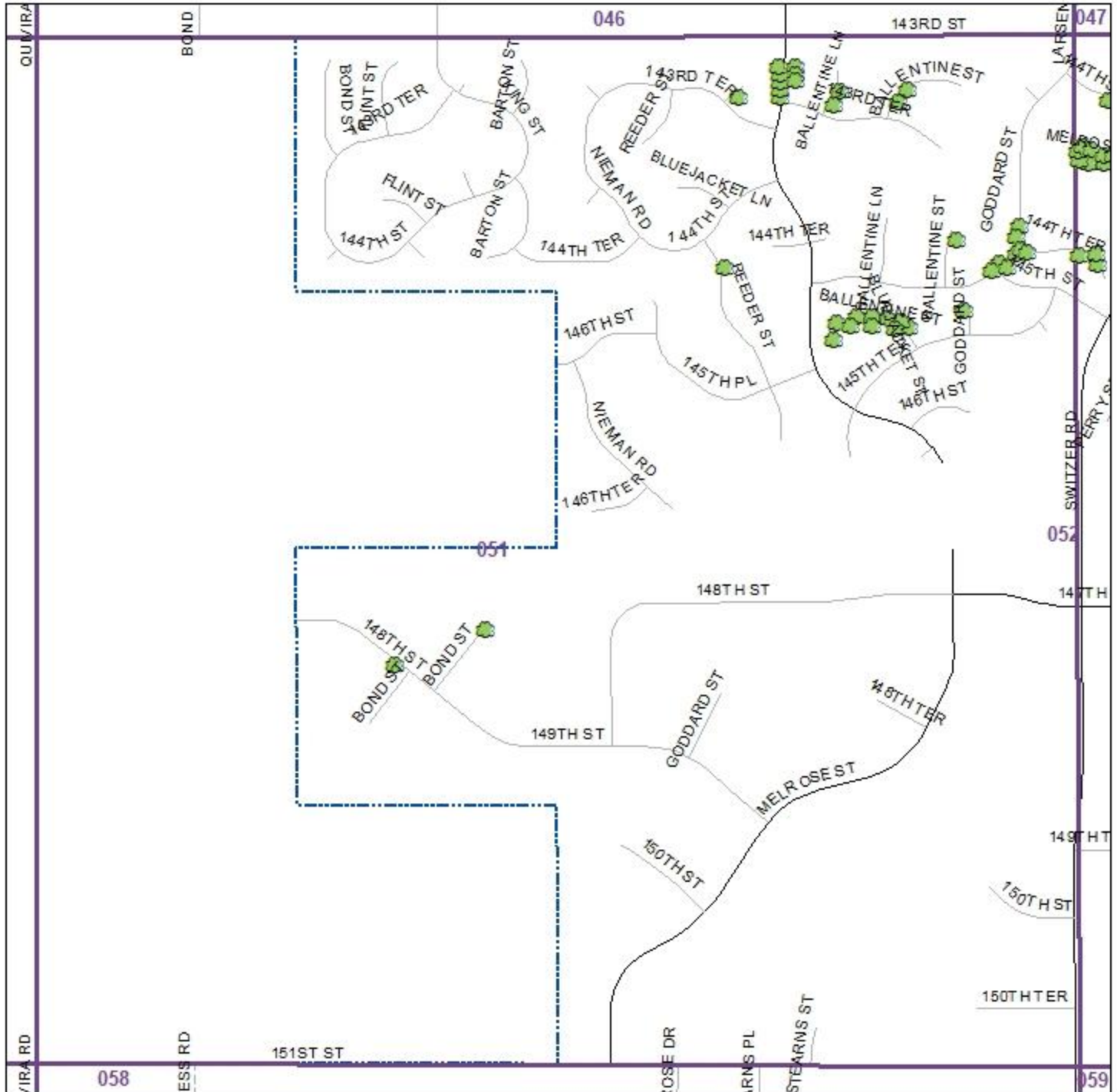




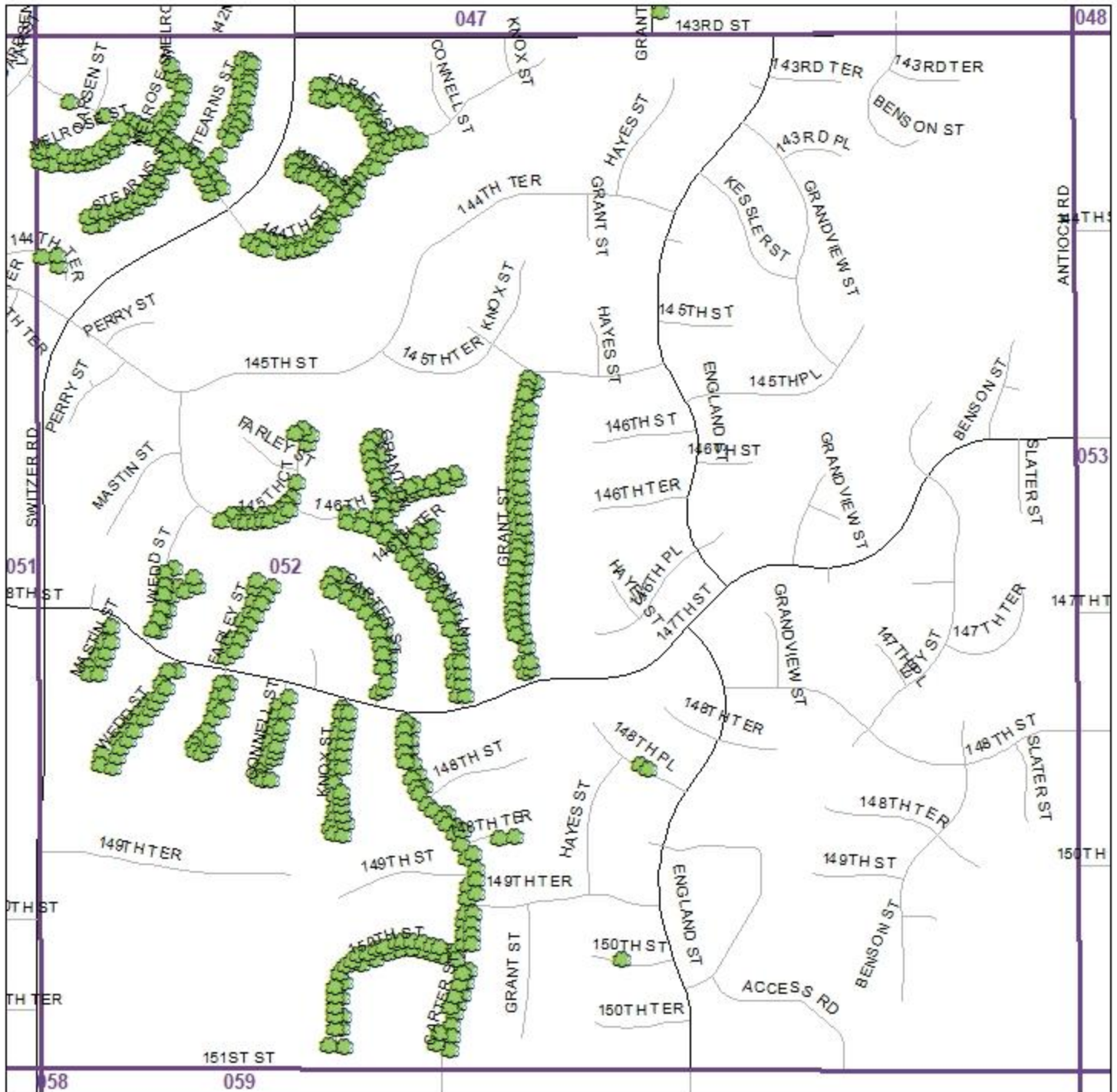
Timbers Edge neighborhood



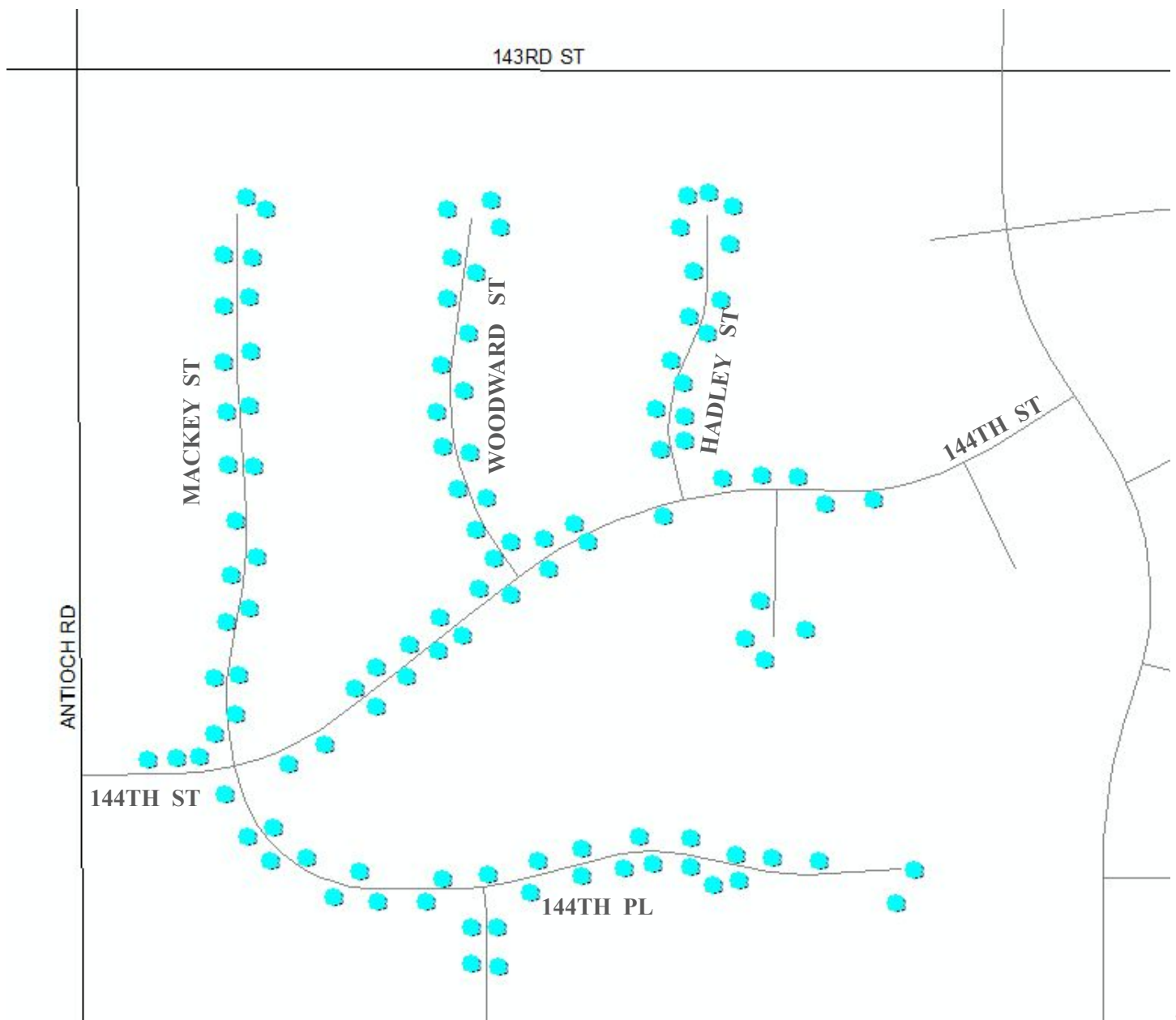
ARPA-Funded Ash Street Tree Removal 2025



ARPA-Funded Ash Street Tree Removal 2025



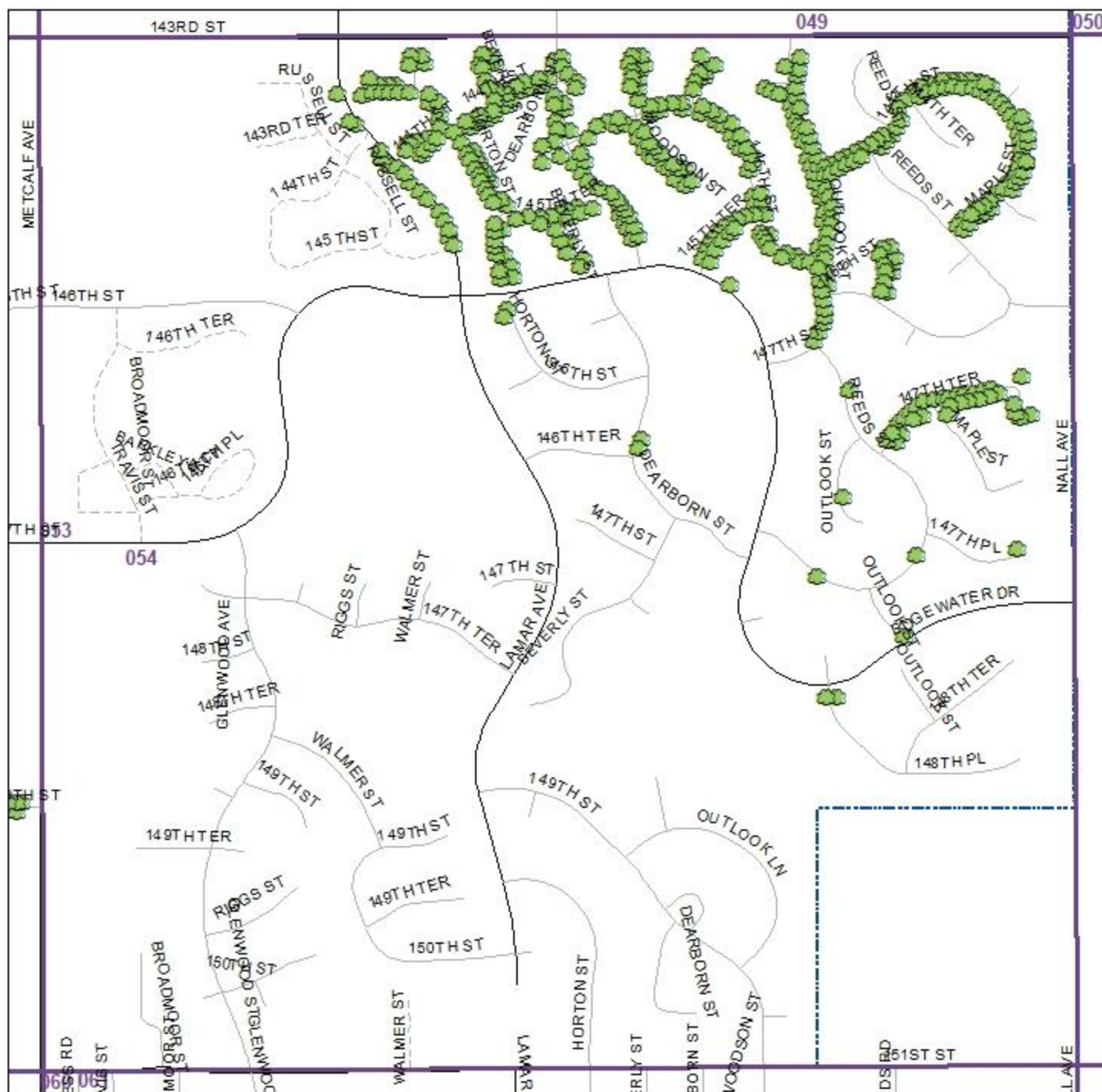
Village of Kensington neighborhood



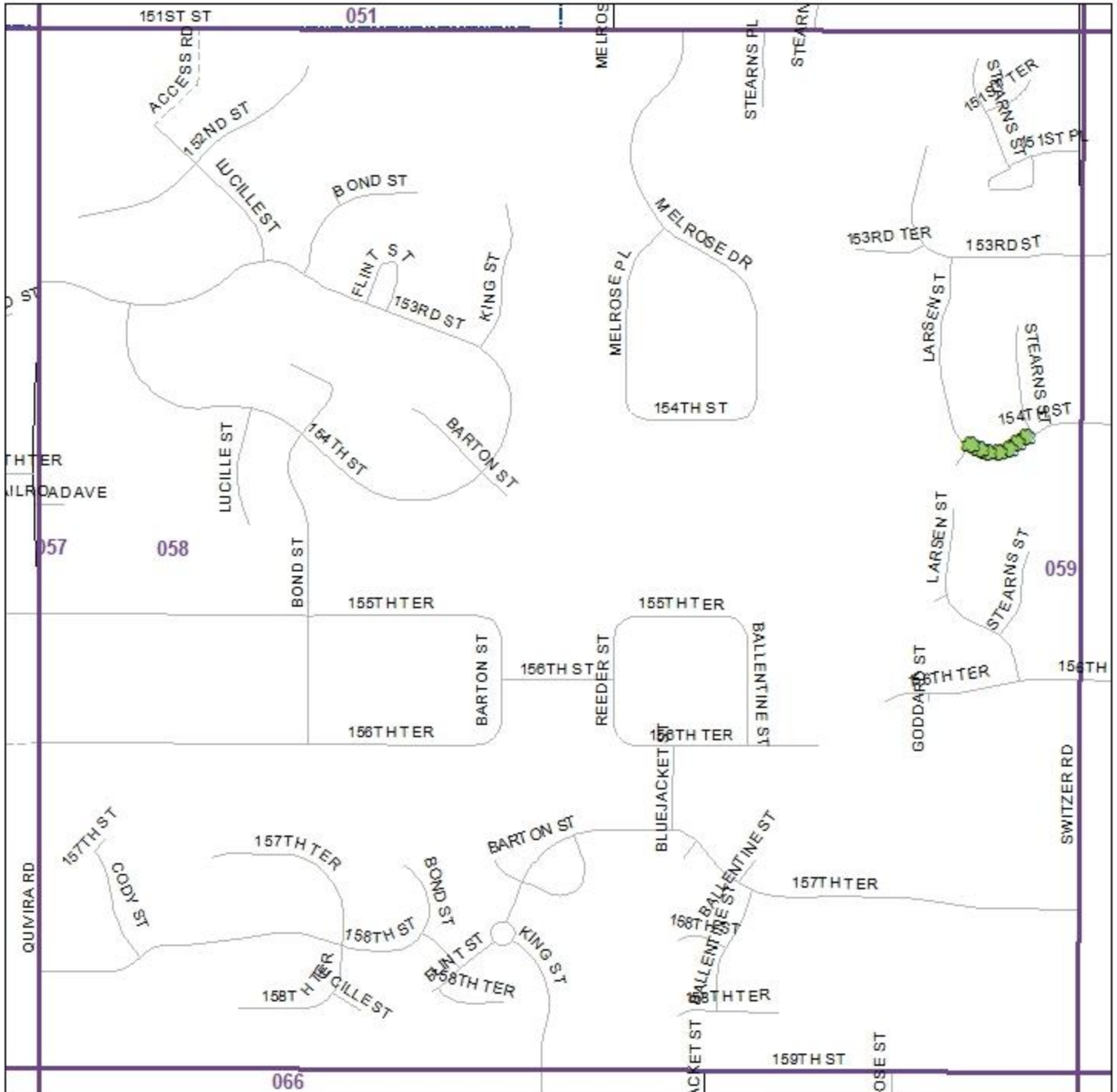
ARPA-Funded Ash Street Tree Removal 2025



ARPA-Funded Ash Street Tree Removal 2025

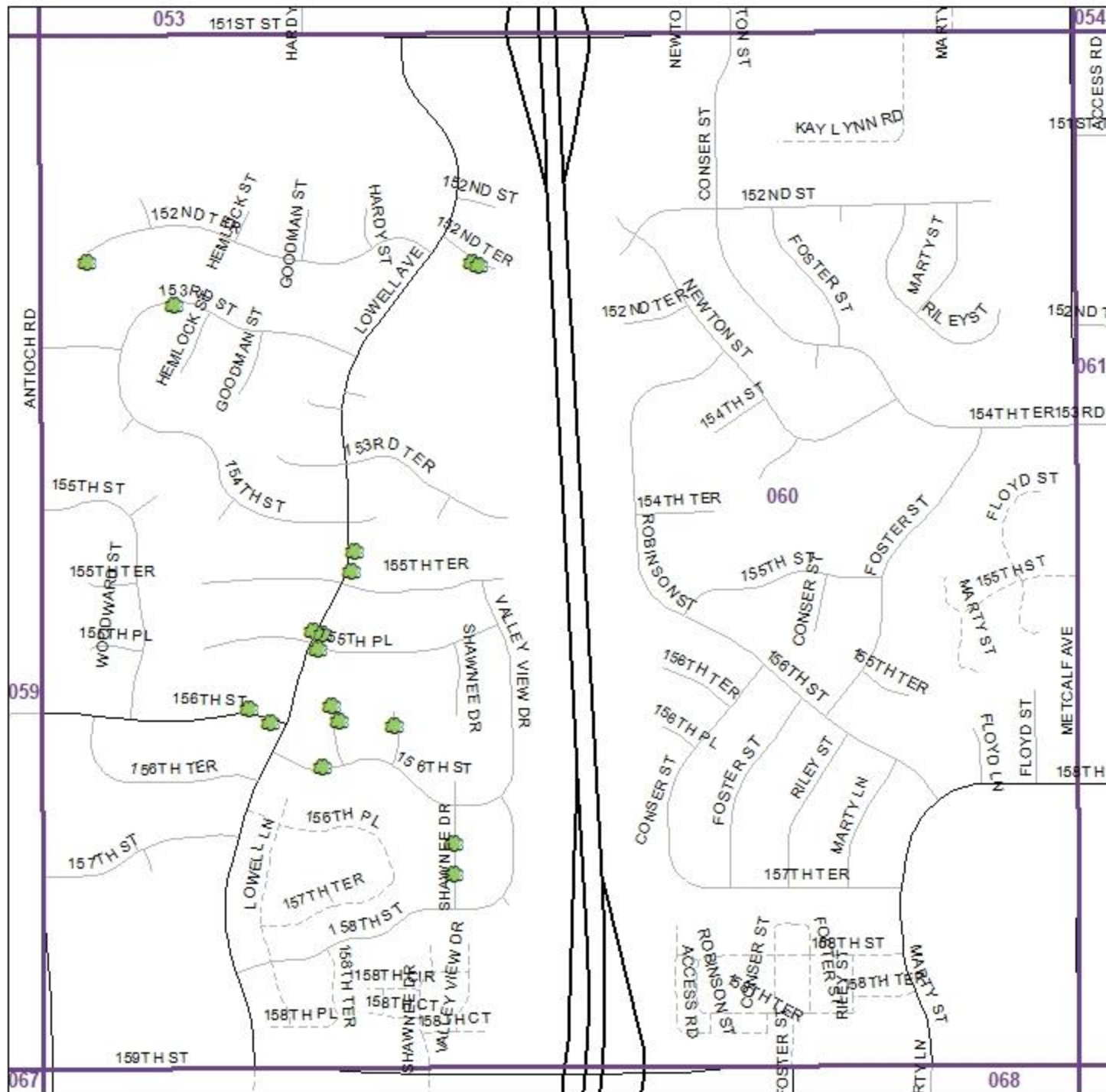


ARPA-Funded Ash Street Tree Removal 2025

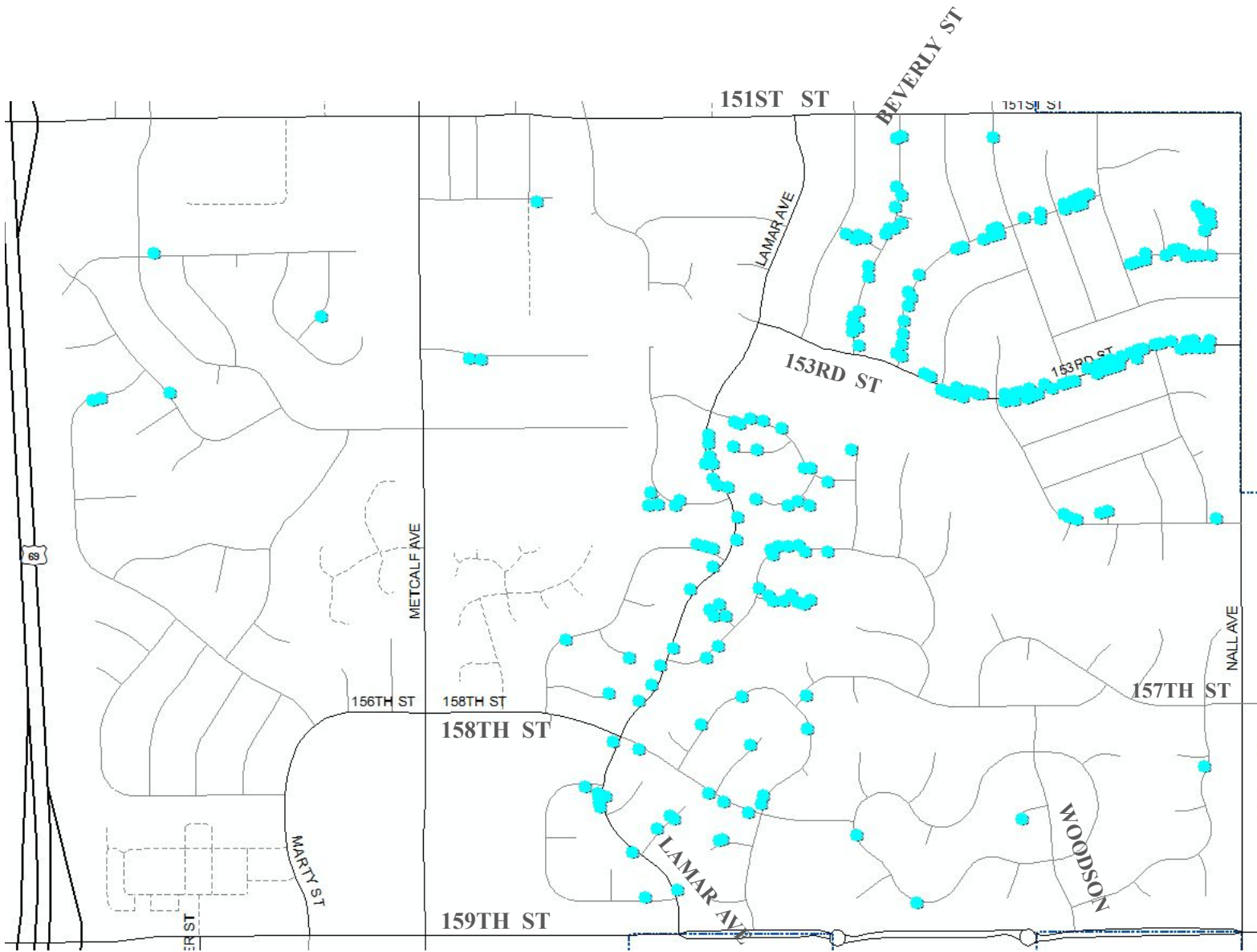




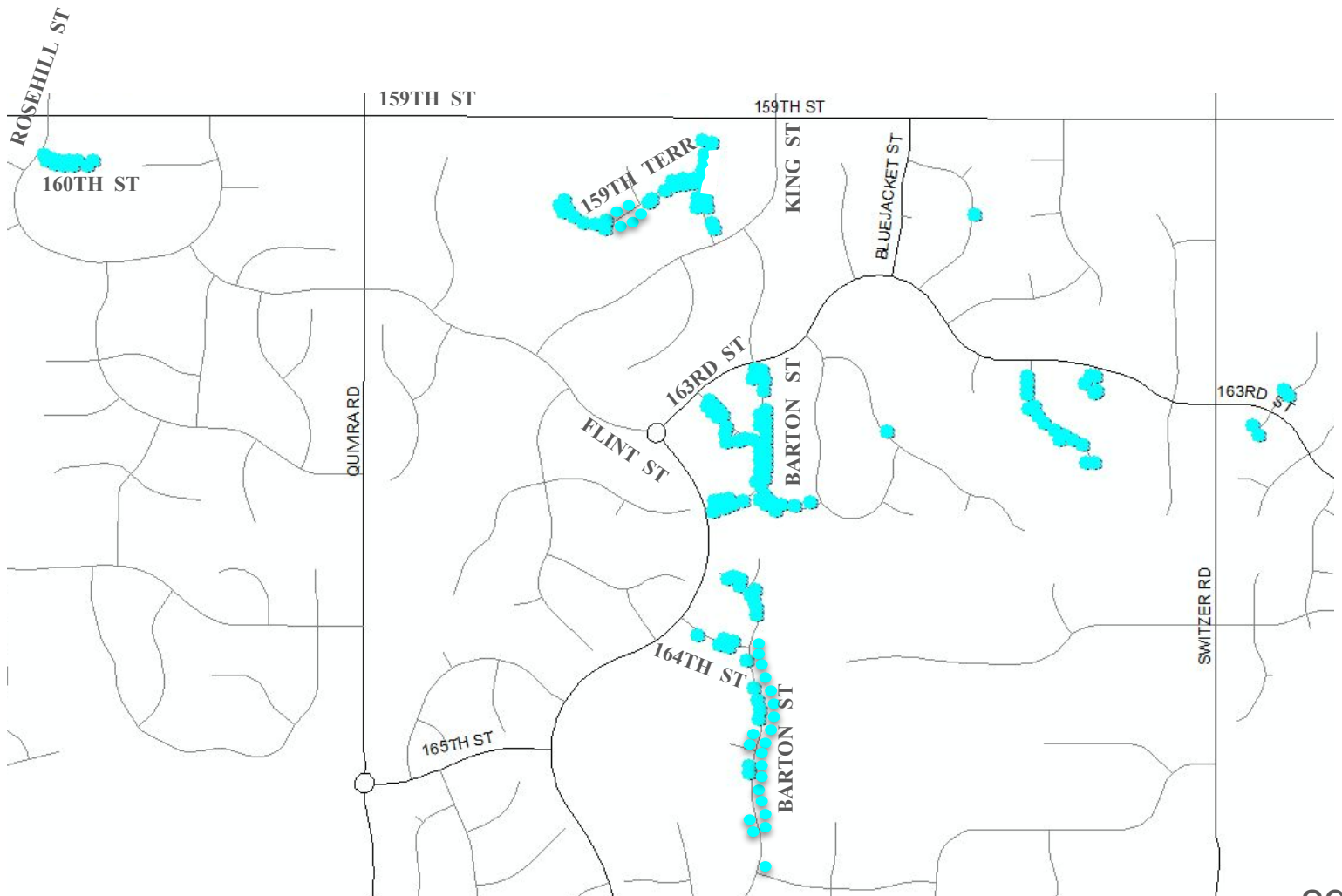
ARPA-Funded Ash Street Tree Removal 2025



Green Meadows, Willow Bend, Sylvan Lake, Brittany Park, & surrounding neighborhoods



Mills Farm, Summerwood Estates, Deer Valley, & Stonegate Reserve neighborhoods



ARPA-Funded Ash Street Tree Removal 2025

